



**Wild Fun**  
Designed by Pat Wodskow

Featuring “Born to be Wild” Cuddle by My Lazy Daisy, Kozy Cuddle Solids & Cuddle Classics  
48” x 56”

**Fabrics:**

2/3 yard Buddies Cuddle Blue

2/3 yard Ringlet Cuddle Blue

½ yard Swiss Dot Cuddle Midnight/Snow

1 2/3 yards Chevie Cuddle Blue (backing)

¼ yard Swiss Dot Cuddle Midnight/Snow (binding)

Random Scraps or precuts of Cuddle 3® and Cuddle Dimple® in these colors:

Silver, Baby Blue, Jade and White for accent strips.

**Notions:**

50” x 60” Warm Bond® by The Warm Company batting (optional)

SCHMETZ® Stretch 90/14 needle

Walking foot

Signature thread #40

505® Spray and Fix Adhesive by ODIF®

OLFA® Deluxe Rotary Cutter and pinking and wave blade

Basic sewing supplies

*Cutting Instructions:*

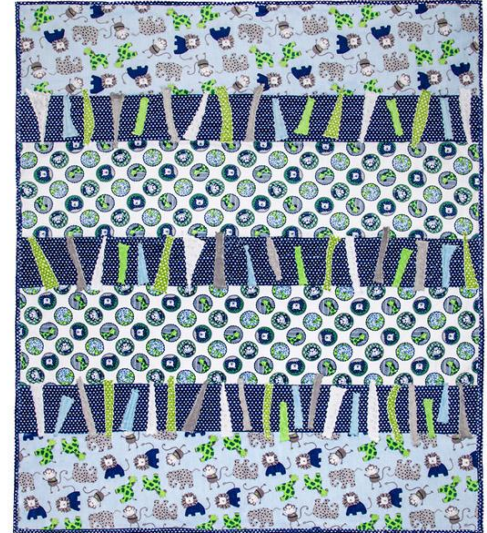
Cut 2-11” strips of Buddies Cuddle Blue

Cut 1-11” strip of Ringlet Cuddle Blue

Cut 3-6” strips of Swiss Dot Cuddle Midnight/Snow

Cut 4-2” strips of Swiss Dot Cuddle Midnight/Snow (binding)

Cut random scraps for accent pieces (pinking blade optional)



**Instructions:**

1. Use the Sew and Flip method, sewing each row on through the back and batting piece.
2. Square up and bind.
3. Using the scraps or precuts cut random shapes for accent pieces. I liked using a wave or pinking blade to create more designs. Secure them down to the Midnight Swiss Dot sections with ODIF® 505 spray adhesive. Only work on one row at a time as the strips will come off while you are working.
4. Topstitch the accent pieces onto the quilt by sewing through the back and backing. I used about a 3/8” seam allowance.

For more information on the Sew and Flip method and binding with Cuddle visit [shannonfabrics.com](http://shannonfabrics.com)

