

Menagerie

47" x 61"

Featuring "Jungle Tales" & "Bubble Dot" from
A Shannon Studio Collection™

Note: Pattern is written for four colorways. Changes for other color options are on color card. Pattern has pieced and appliqué instructions, however yardages are the same.

	Brown/Orange
Animal Print: 1/2 yard	2SSC-5000-2
Bubble Dot: 1/2 yard	CP-2400-2
Cuddle 3 #1: 1/3 yard	C3-pumpkin
Cuddle 3 #2: 1 7/8 yard	C3-brown
Leaf Print: 3/8 yard	2SSC-5001-2
Backing: 1 7/8 yards	CP-2400-2
Batting:	53" x 67"

Notions: Thread for piecing, appliqué and quilting,
size 90/14 universal needle, walking foot, 505® Spray and Fix
by ODIF, tailor's chalk.

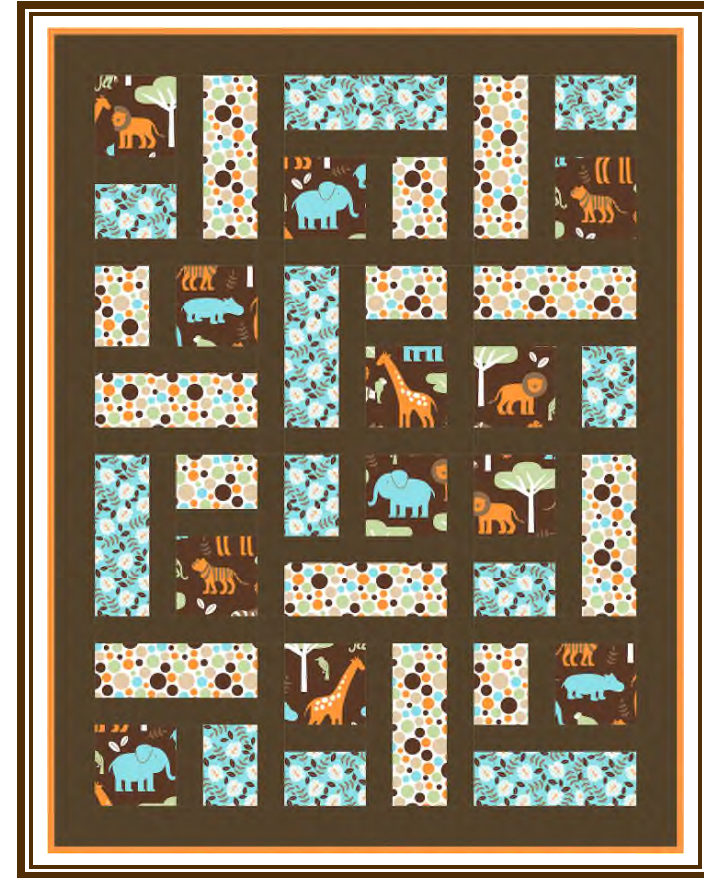
Batting used is Warm Bond® by The Warm Company

Designed by Christine Stainbrook

The information in this pattern is presented in good faith.
Every effort has been taken to assure the accuracy herein.
This pattern may not be reproduced in any form, either electronic
or hard copy. The finished product may not be used for mass
retail, commercial, or wholesale purposes, markets, or trade shows
without written permission.

© 2013 Project House 360

Menagerie



A Project House 360 Quilt Pattern
featuring fabric collections from

Shannon
F A B R I C S

Menagerie

Color Card

Brown/Orange



Animal Print

Pink/Brown



2SSC-5000-3

Pink/Grey



2SSC-5000-4

Blue/Grey



2SSC-5000-5



Bubble Dot



CP-2400-3



CP-2400-4



CP-2400-5



Leaf Print



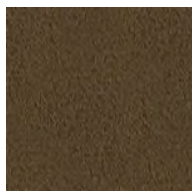
2SSC-5001-3



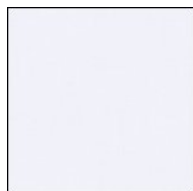
2SSC-5001-4



2SSC-5001-5



C3-brown



C3-snow



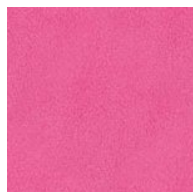
C3-silver



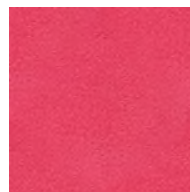
C3-silver



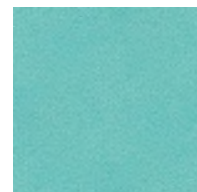
C3-pumpkin



C3-fuchsia



C3-watermelon



C3-topaz

Pattern is written for both pieced and appliquéd versions. Yardages are the same for both.

Make fabric substitutions as per your colorway (brown/orange is written).

Instructions for Sew & Flip method can be found at: www.shannonfabrics.com

Menagerie

Cutting - Pieced:

Animal Print: 12 – 7" squares	Bubble Dot: 8 – 5" x 13" 5 – 5" x 7"	Brown: 12 – 3" x 7" 20 – 3" x 13" 3 – 3" x 41" 5 – 4" x 60"
Leaf Print: 4 – 5" x 13" 7 – 5" x 7"		



Cutting – Appliqué:

Animal Print: 12 – 6" squares	Leaf Print: 4 – 4" x 12" 7 – 4" x 6"	Bubble Dot: 8 – 4" x 12" 5 – 4" x 6"
----------------------------------	--	--



Instructions - Pieced

Blocks:
Make 12

Use diagrams 1 & 2 to make the blocks as shown using 1/2" seams. Label blocks as you make them for easier assembly.

Diagram #1 (basic block layout)

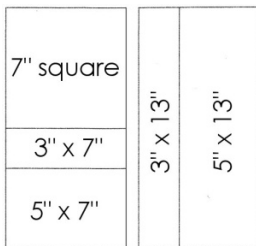


Diagram #2 (block rotation and fabric placement)



Assembly:

Add the brown 3" x 13" strips to stitch the blocks into rows. Prepare backing and batting as per sew & flip method.

Use the sew & flip method to combine the rows of blocks and the brown 3" x 41" sashings, alternating as shown on cover image.

Cut two brown 4" x 60" strips to 4" x 55" and add to the sides of the quilt.

Cut two brown 4" x 60" strips to 4" x 48" and add to the sides of the quilt.

Quilt as desired.

Bind with the pumpkin fabric.



Instructions – Appliqué

Remove the selvedge edges from the brown fabric.

In the top left corner, measure 3 1/2" from each raw edge and mark a chalk line.

Begin placing the animal print, bubble dot and leaf print patches as shown, using spray adhesive, and pin in place. Patches are 2" apart. Appliqué in place using a blanket or zigzag stitch.

When all patches have been placed, cut remainder of brown fabric away, leaving a 3 1/2" border on remaining outer edges.

Prepare backing, batting and quilt top using sew & flip method.

Quilt as desired.

Bind with pumpkin fabric.

