

# Marquee

42" x 48"

Featuring "Celebrate Seuss\*" from Shannon Fabrics

Party Stripe Celebration: 1 1/8 yards	#DSC-2001-1
Wonky Dots Sunshine: 1/2 yard	#DSC-2006-3
Electric Blue Dimple: 1/2 yard	#CD-Electric Blue
Cherry/White Stripe: 1/3 yard	#DSC-2009-1
Backing:	1 1/4 yards
Batting: optional	45" x 50"

Notions: Thread for piecing and quilting,  
90/14 stretch sewing machine needle, walking foot,  
505® Spray and Fix adhesive by ODIF.  
Batting used is Warm Bond® by The Warm Company

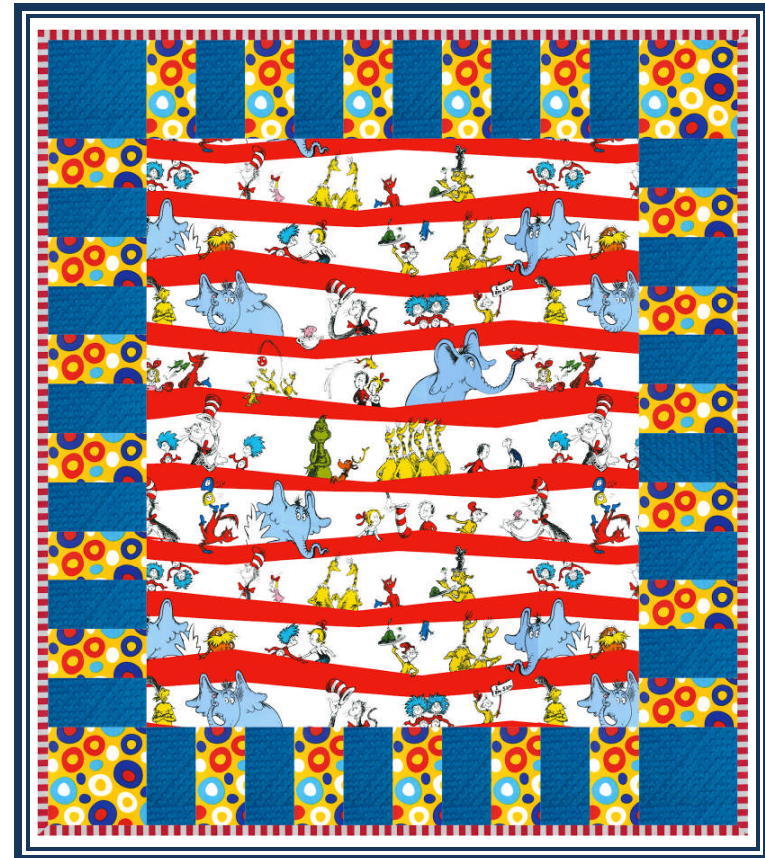
Dr. Seuss Properties TM & © 1957 Dr. Seuss Enterprises, L.P.  
All Rights Reserved.

Designed by Gayle Camargo

The information in this pattern is presented in good faith.  
Every effort has been taken to assure the accuracy herein.

© 2012 Shannon Fabrics  
3131 S. Alameda St.  
Los Angeles, CA 90058  
(866)624-5252  
www.shannonfabrics.com

# Marquee

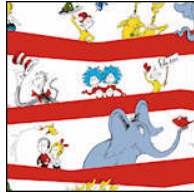


By Gayle Camargo  
featuring fabric collections from

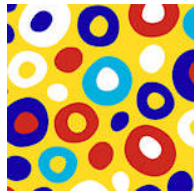
**Shannon**  
F A B R I C S

# Marquee

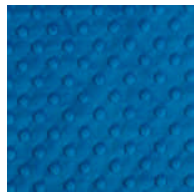
## Color Card



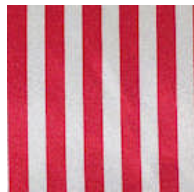
Party Stripe Celebration  
#DSC-2001-1



Wonky Dots Sunshine  
#DSC-2006-3



Electric Blue Dimple  
#CD-Electric Blue



Cherry/White Stripe  
#DSC-2009-1

# Marquee

Cutting:

Celebration Stripe:  
1 – 31" x 37"

Wonky Dots:  
2 – 7" x 60" strips

Blue Dimple:  
2 – 7" x 60" strips



Seam Allowance is 1/2" unless otherwise stated.

Cut one 7" square from each of the 7" x 60" wonky dots and blue dimple strips. Cut the remaining strips into 22 – 4" x 7" pieces for each fabric.

Stitch together alternating colors as shown in cover image, with ten pieces each for the top and bottom; twelve pieces each for the side borders.

Layer backing and batting.

Center celebration stripe on backing and batting. Pin or quilt in place.

Add the side borders to the celebration stripe center. Spray with glue and flip, pressing down in place.

Add the blue dimple and wonky dots 7" squares as shown to the top and bottom of the border strips.

Stitch in place, matching seams. Spray and flip, pressing down in place.

Quilt as desired.

Bind with cherry/white stripe fabric.

