

# Cuddle® Baby Blanket

Approximate Finished Size: 29" x 29"  
Makes 2 blankets

Surround the babies you love with all the softness they deserve. With the fun color and print options and easy construction, this may become your go-to baby gift for years to come!

## Fabric Requirements, (as shown)

- 1 yard Jungle Friends Digital Cuddle® Dusty Blue, Blanket Top
- 1 yard Luxe Cuddle® Hide Baby Blue, Blanket Bottom

## Suggested Notions

- 90/14 stretch machine needle
- Polyester thread
- Felt tip marker or ballpoint pen
- Rotary cutter and mat
- Micro-serrated scissors and/or craft knife
- Long, flower head pins
- Fabric clips
- Stiletto
- Point turner
- Walking foot

Also on the cover

*Xanthe Patterns: Stuffed Elephant, Stuffed Lion Cub*

*Funky Friends Factory: Randy Rhino*



For more information on sewing with Cuddle®, scan the QR code or go to:  
[offers.shannonfabrics.com/beginner](https://offers.shannonfabrics.com/beginner)

**Shannon**  
F A B R I C S

Making The World A Softer Place™

The information in this pattern is presented in good faith.  
Every effort has been taken to assure the accuracy herein.

© 2022 Shannon Fabrics Inc., 3131 S. Alameda St., Los Angeles, CA 90058  
[info@shannonfabrics.com](mailto:info@shannonfabrics.com) | [www.shannonfabrics.com](http://www.shannonfabrics.com) | 866.624.5252

97.CBB

**Shannon**  
F A B R I C S  
Making The World A Softer Place™

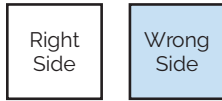
# Cuddle® Baby Blanket



# Cuddle® Baby Blanket

## GENERAL DIRECTIONS

- Read *Cuddle® Basics* before beginning.
- All seam allowances are ½".



## Cutting

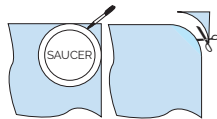
- From both Blanket Top and Blanket Bottom fabrics, cut:
  - 1 (30" x 30") square.

*Note: If desired, cut an extra set of 30" squares for a second blanket.*

## Round the corners

*Note: If you prefer square corners on your blanket, skip this step and go directly to Assembly.*

- At each corner, use a saucer to mark rounded corners.

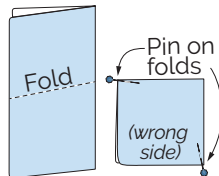


- Cut the corners.

## Assembly

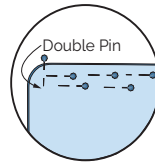
### Align the top and bottom

- On each square, note the direction of the nap. Place a pin or a fabric clip to indicate each top edge.
- Fold each square in half, then in half again.
- Place a pin at each fold.



- With right sides together and naps going in the same direction, smooth out the squares.
- Align the center pins on all four sides. Pin the Top to the Bottom at each center pin mark.

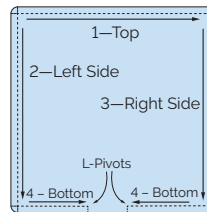
- Pin the top edges together by first pinning at the center, then each corner. Starting from the center pin and working toward each corner, double pin across the top edge.



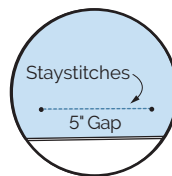
*Note: The more pins used, the easier it is to sew smoothly. Time invested in pinning will reduce frustration when stitching these long seams.*

- In the same manner, pin the left seam—center and corners first, then the remainder of the seams.

- Sew the left side seam from top to bottom, backstitching as before.

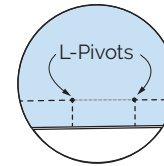


- In the same manner, pin and sew the right side.
- On the wrong side of each of the bottom edges, mark a 5" gap for turning.
- Staystitch between the marks on both the top and bottom.



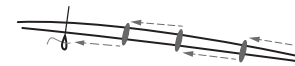
- Sew the bottom edge, leaving the 5" gap open. Sew an L-Pivot at the gap.

*Note: The L-Pivot secures the seam ends when the blanket is turned and also helps the seam allowance turn in for hand sewing.*



## Finishing

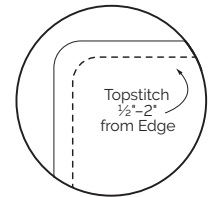
- Turn right side out. Push out and smooth the corners with a point turner.
- Pin the turning gap closed. Hand stitch with a ladder stitch.



*Ladder Stitch: Using polyester thread and a hand sewing needle, catch one side of the opening, then the other. Pull to tighten every few stitches.*

- Pin layers together approximately 3" from the side, parallel to the edge.

- Topstitch with a straight or serpentine stitch, ½"-2" from the edge.



- Use a stiletto to pull the fibers from the seams to create a finished look on the edge.

## Cuddle® Basics

- Seam allowances are ½".
- Mark measurements on reverse side of fabric with a felt tip marker or ballpoint pen.
- Cut with a rotary cutter, craft knife, or micro-serrated scissors.
- Shake cut pieces or put in a no-heat dryer with a damp wash cloth for a few minutes to remove loose fibers.
- Sew with polyester thread in the top and the bobbin.
- Reduce presser foot pressure when sewing multiple layers.
- Increase stitch length to 3-4 mm.
- Double pin by using 2 rows of pins—the first row every 1½" along the seam line and a second row 1" to the left and parallel to the cut edge.
- Backstitch at beginning and end of seams.
- Use an even-feed or walking foot, if possible. It makes a difference!

