

Cozy Cuddle® Robe

Finished Size: Fits S, M, L

(Measurement at hip: 62")

Adaptation for Curvy included (Measurement at hip: 70")

Soft, comfy, and warm—this robe has it all. If you've ever wanted a luxurious robe, now you can make your own. Roomy, with deep pockets and a lined hood—you'll want to live in it!

Fabric Requirements *(as shown)*

- 3 yards Luxe Cuddle® Heather Blossom, Robe, Hood, and Pockets
- 1½ yards Luxe Cuddle® Hide Natural, Bands: Front, Pocket, Sleeve; Hood Lining, and Belt

Suggested Notions

- Grosgrain ribbon, ½" x 6", for hanging loop
- Cardstock, for templates
- 90/14 stretch machine needle
- Polyester thread
- Felt tip marker or ballpoint pen
- Rotary cutter and mat
- Micro-serrated scissors and/or craft knife
- Long, flower head pins
- Fabric clips
- Walking foot

Pattern designed by Rose DeBoer for Shannon Fabrics.



For more information on sewing with Cuddle®, scan the QR code or go to: offers.shannonfabrics.com/beginner



The information in this pattern is presented in good faith.
Every effort has been taken to assure the accuracy herein.

© 2023 Shannon Fabrics Inc., 3131 S. Alameda St., Los Angeles, CA 90058
info@shannonfabrics.com | www.shannonfabrics.com | 866.624.5252

98.CCR

Cozy Cuddle® Robe



Cozy Cuddle® Robe

Finished Size: Fits most (Finished measurement at hip: 62")
Adaptation for Curvy included (Measurement at hip: 70")

DIRECTIONS

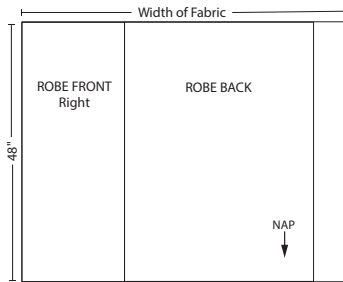
- Read *Cuddle® Basics* before beginning.
- Finger press all seams open.

ROBE	Right Side	Wrong Side
LINING	Right Side	Wrong Side

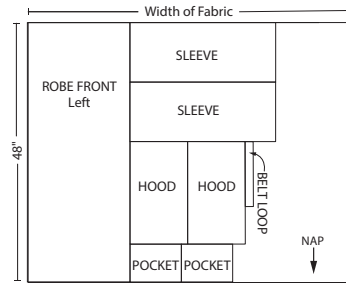
Follow Cutting Diagrams for most efficient use of fabric.

Cutting

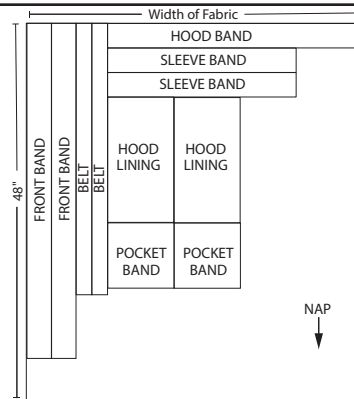
1. From the Main Cuddle®, cut:
 - 2 (48") lengths.
 - From the first length, cut:
 - 1 (19" x 48"), *Robe Front.*
 - 1 (35" x 48"), *Robe Back.*



- From the second length, cut:
 - 1 (19" x 48"), *Robe Front.*
 - 2 (27" x 7"), *Sleeves.*
 - 2 (10" x 7"), *Pockets.*
 - 1 (13" x 2½"), *Belt Loop.*
 - 2 Outer Hoods*, 1 main, 1 reverse.



2. From the Lining Cuddle®, cut:
 - 2 (10" x 7"), *Pocket Bands.*
 - 2 (7" x 48"), *Front Bands.*
 - 1 (36" x 7"), *Hood Band.*
 - 2 (27" x 7"), *Sleeve Bands.*
 - 2 (4½" x 40"), *Belt.*
 - 2 Hood Linings*, 1 main, 1 reverse
3. From cardstock, cut:
 - 1 Front Neck Trim Template.
 - 1 Back Neck Trim Template.



Adapting the Size

To make the Curvy size, make the following adjustments when cutting:

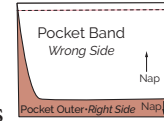
- From the Cuddle®, cut:
- 2 (21" x 48"), *Robe Fronts.*
 - 1 (38" x 48"), *Robe Back.*

All other cutting and construction processes are the same.

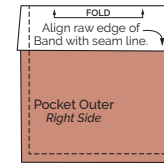
Assembly

Create pockets

1. Right sides together, stitch the 10" edge of Pocket Band to the 10" edge of the Pocket Outer. Finger press the seam toward the Band.



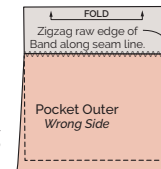
2. With right sides together, fold the Band so the raw edge aligns with seam line. Pin.



3. Sew down each side, then across the bottom.

Note: Stitching on the Outer Pocket is a guideline for a future step.

4. Flip Pocket Band right side out.



5. With the seam allowance up, zigzag (4x4mm) the raw edge of the Band to the Pocket Outer along the seam allowance.

6. Make the other Pocket.
7. Set the Pockets aside.

Add the Sleeve Bands

1. With right sides together, sew a Sleeve Band to the bottom edge of each of the Sleeves.



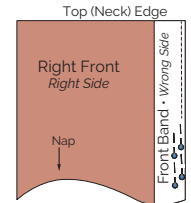
Note: Before sewing, check that the nap on the Sleeve and Sleeve Band are going in the same direction.

2. Repeat for the other Sleeve Band.
3. Set the Sleeves aside.

Attach the Robe Front Bands

1. With right sides together and nap running down, align a Front Band to the right side the Robe Front. Starting at the neck edge, double pin, then sew the long edge.

Note: Trim any extra band fabric even with the bottom edge.



Continued on following page

Cuddle® Basics

1. Seam allowances are ½" unless otherwise noted.
2. Use a felt tip marker or ballpoint pen to trace appliqués or mark measurements on reverse side of Cuddle®.
3. Cut Cuddle® with a rotary cutter, craft knife, or scissors.
4. Shake cut pieces or put in a no-heat dryer with a damp washcloth for a few minutes to remove loose fibers.
5. Sew with polyester thread in the top and the bobbin.

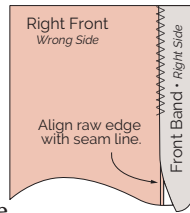
6. Reduce presser foot pressure when sewing multiple layers.
7. Increase stitch length to 3–4 mm.
8. Double pin by using 2 rows of pins—the first row every 1½" along the seam line and a second row 1" to the left and parallel to the cut edge.
9. Backstitch at the beginning and end of each seam.
10. Use an even-feed or walking foot, if possible. It makes a difference!



Continued from previous page

2. Flip Front Band to the inside of the Robe Front, aligning the raw edge with the seam line.

3. Stitch the raw edge along the seam line using a 4x4mm zigzag.



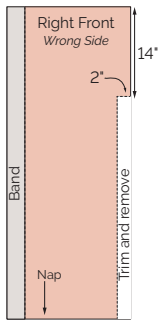
4. In the same manner, attach the other Front Band to the opposite edge of the other Robe Front.

Note: Before sewing, check that you have a Left and a Right Front.

Trim the Robe Front (right)

1. Wrong side up, smooth the Robe Front with the Front Band on the left side.

2. Starting from the top right corner (corner without the Band), measure 14" down from the top edge. Mark a 2" line at this point.

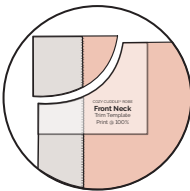


3. From the mark, draw a line 2" parallel to the side edge to the bottom.

4. Cut on the marked line.

Note: These extensions will make sewing the sleeves on much easier.

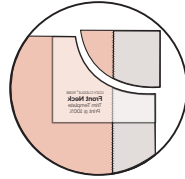
5. In top left corner, use the Front Neck Trim Template to mark and cut the front neckline.



Note: Mark and cut through the Front and the Band.

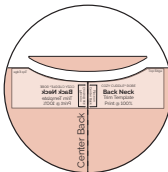
Trim the Robe Front (left)

1. Smooth out the other Robe Front.
2. Starting from the top left, mark and trim the side seam in the same manner as the Front Right.
3. In the top right corner, use the Trim Template (reversed) to cut the neckline.

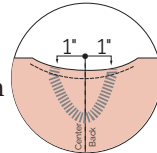


Trim the Robe Back

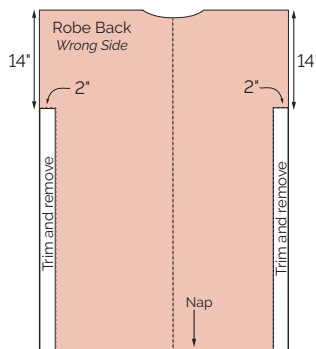
1. Fold Robe Back in half vertically. Mark the center fold at the top.
2. Unfold the Back. On the upper edge, use the Back Neck Trim Tool to mark and cut the neckline.



3. On the wrong side of the Robe Back, pin each end of the grosgrain ribbon 1" from center back. Sew the ends in place.
4. From the upper right and left corners, measure 14" from top edge. Mark a 2" line at these points.

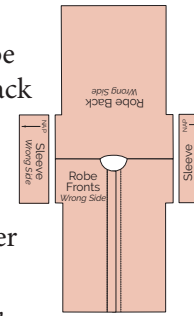


5. As before, from those marks, draw lines 2" parallel to the side edges all the way to the bottom.
6. Cut on the marked lines.



Join Robe Front, Back, + Sleeves

1. With right sides together, sew Robe Fronts to Robe Back at the shoulders.
2. With right sides together, sew Sleeves to shoulder extensions.



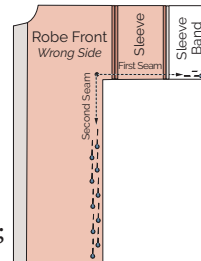
Note: Have nap on sleeves run down from shoulders.

Sew the Side Seams

1. With right sides together, double pin the Sleeve seam and side seam.

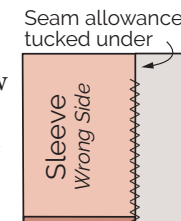
Note: From underarm, pin down the length of the Sleeve. Then pin from underarm down side seam.

2. Sew the sleeve/side seam in the order it was pinned: from the underarm to the end of the Sleeve Band; then from the underarm down to the hem.



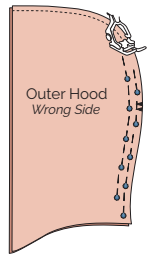
Finish the Sleeve Band

1. Turn the Sleeve inside out. Push the seam allowance toward the Sleeve Band.
2. Pin Sleeve Band wrong sides together so the raw edge meets the seam line.
3. With a 4x4mm zigzag, sew the raw edge of the Band to the Sleeve along the seam line.



Make the Hood

1. With right sides together and matching notches, double pin and sew the center back seam of the Outer Hood. Press the seam allowances open to reduce bulk.

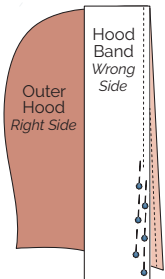


2. As with the Outer Hood, sew the back seam of the Hood Lining. Press the seam allowances open to reduce bulk.

3. On wrong side of the Hood Band, mark the center on both long edges.



4. With right sides together, double pin and sew the Hood Band to the Outer Hood. Match the mark on the Hood Band to the center seam.



5. With right sides together, double pin and sew the other long edge of the Hood Band to the Hood Lining. Match the mark on the Hood Band to the seam allowance.

6. With wrong sides together, slide the Hood Lining into the Outer Hood. Set aside.

Note: The Hood Band should show equally on the Outer and Lining.

Continued on following page

COZY CUDDLE® ROBE

Hood

- Cut 2 — Outer Hood
[1 Main and 1 Reverse]
- Cut 2 — Hood Lining
[1 Main and 1 Reverse]

ENLARGE @ 200%

Nap



