

# Luxe Throw

*Approximate Finished Size: 58" x 70"*

*A simple, yet luxurious, throw to add beauty and warmth to your home. Made with Luxe Cuddle®, this soft throw will keep you toasty in the winter and brings comfort to any setting.*

## Fabric Requirements (as shown)

- 4 yards Luxe Cuddle® Wild Rabbit Silver Lining
- OR
- 2 (2-yard) Cuddle® Cuts

## Suggested Notions

- 90/14 stretch machine needle and polyester thread
- Felt tip marker or ballpoint pen
- Rotary cutter and mat
- Micro-serrated scissors and/or craft knife
- Long, flower head pins
- Fabric clips
- Stiletto
- Point turner
- Walking foot



For more information on sewing with Cuddle®, scan the QR code or go to:  
[offers.shannonfabrics.com/beginner](https://offers.shannonfabrics.com/beginner)



The information in this pattern is presented in good faith.  
Every effort has been taken to assure the accuracy herein.

# Luxe Throw



# Luxe Throw

Approximate Finished Size: 58" x 70"

## GENERAL DIRECTIONS

- Read *Cuddle® Basics* before beginning.
- All seam allowances are  $\frac{1}{2}$ ".



## Cutting

If you have 2 (2-yard) *Cuddle® Cuts*, check that they are exactly the same size, then skip ahead to Assembly.

1. Cut the 4-yards of Luxe Cuddle® into 2 (72" x WOF\*) rectangles.

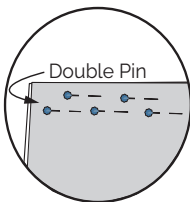
*Note: Basically, cut the fabric in half. It won't matter if the rectangles are slightly shorter or longer than 72" as long as they are equal in length.*

2. Do not cut off the selvages.

## Assembly

1. On each piece, note the direction of the nap. Place a pin or a fabric clip to indicate the top edge.
2. With right sides together and naps in the same direction, smooth out the rectangles with the edges aligned.

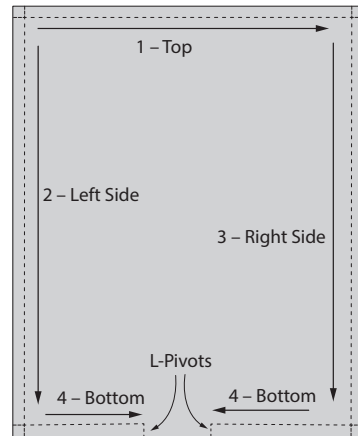
3. Double pin the top edges together. Pin the center first, then both corners. Continue pinning in between the points.



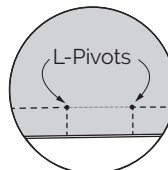
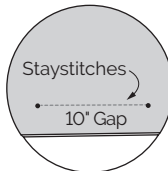
*Note: The more pins used, the easier it is to sew smoothly. Time invested in pinning will reduce frustration when stitching these long seams.*

\*WOF = width of fabric

4. Sew across the top, backstitching at the beginning and end.
5. In the same manner, pin the left seam—center and corners first, then the remainder of the seam.



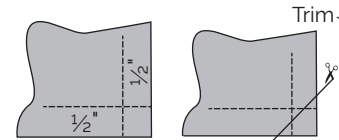
6. Sew the left side seam from top to bottom, backstitching as before.
7. In the same manner, pin and sew the right side seam.
8. On the wrong side of each of the bottom edges, mark a 10" gap for turning.
9. Staystitch between the marks on both the top and bottom.
10. Sew the bottom edge, leaving the 10" gap open. Sew L-Pivots at the gap.



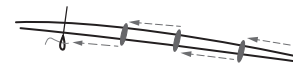
*Note: L-Pivots secures the seam ends when the throw is turned and also helps the seam allowance turn in for hand sewing.*

## Finishing

1. Trim the corners, if desired.  
*Note: Do not clip past the stitching.*

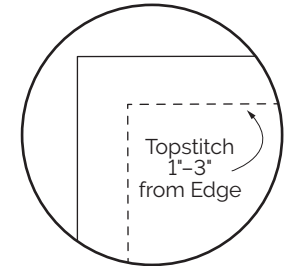


2. Turn right side out. Push out the corners with a point turner.
3. Pin the turning gap closed. Hand stitch with a ladder stitch.



*Ladder Stitch: Using polyester thread and a hand sewing needle, catch one side of the opening, then the other. Pull to tighten every few stitches.*

4. Topstitch around the entire throw 1"-3" from the edge.



5. Use a stiletto to pull the fibers from the seams to create a finished look on the edge.

## • Cuddle® Basics

1. Seam allowances are  $\frac{1}{2}$ ".
2. Mark measurements on reverse side of fabric with a felt tip marker or ballpoint pen.
3. Cut with a rotary cutter, craft knife, or micro-serrated scissors.
4. Shake cut pieces or put in a no-heat dryer with a damp wash cloth for a few minutes to remove loose fibers.
5. Sew with polyester thread in the top and the bobbin.
6. Reduce presser foot pressure when sewing multiple layers.
7. Increase stitch length to 3-4 mm.
8. Double pin by using 2 rows of pins—the first row every  $1\frac{1}{2}$ " along the seam line and a second row 1" to the left and parallel to the cut edge.
9. Backstitch at beginning and end of seams.
10. Use an even-feed or walking foot, if possible. It makes a difference!

