

Star Pillow

Approximate Finished Size: 16" diameter

Make a star for your star! A delightful accessory for a child's bedroom—or a sweet gift for a new baby.

Fabric Requirements

- ⅝ yard Sparkle Cuddle® Glitter Navy/Silver

Suggested Notions

- Batting, 2 (20" x 20") squares
- Polyester filling, *for stuffing*
- 90/14 stretch machine needle
- Polyester thread
- Hand sewing needle
- Felt tip marker or ballpoint pen
- Rotary cutter and mat
- Micro-serrated scissors
- Craft knife
- Long, flower head pins
- Fabric clips
- Basting spray
- Walking foot



For more information on sewing with Cuddle®, scan the QR code or go to: offers.shannonfabrics.com/beginner



The information in this pattern is presented in good faith.
Every effort has been taken to assure the accuracy herein.

© 2022 Shannon Fabrics Inc., 3131 S. Alameda St., Los Angeles, CA 90058
info@shannonfabrics.com | www.shannonfabrics.com | 866.624.5252

33.SP



Star Pillow



Star Pillow

Approximate Finished Size: 16" diameter

GENERAL DIRECTIONS

- Read *Cuddle® Basics* before beginning.



Preparation

1. Print the Star template at 200%.
2. Cut out to create the template.

Cutting

1. Trace 2 of the Star template on the wrong of the Cuddle®.

Note: Have the nap run down from the top point.

2. Cut out the Star Front and Back.



3. Cut 1 (3" x WOF*) strip for the Band.
4. Cut 2 (20" x 20") batting squares.
5. Spray baste the wrong side of Star Front and Back. Smooth each onto a batting square.
6. Stitch around the outside edge with a wide zigzag.
7. Trim the batting to the edge of each Star.



Assembly

1. Fold Band in half. Mark the fold.



2. On the wrong side of the Front, make a mark ½" in from the top point to guide the placement of the Band.

3. With the nap going away from the Front with and right sides together, pin the center mark of the Band to the top mark on the Front.

4. Pin from the top point to 2" past the bottom indent and the lower left point.

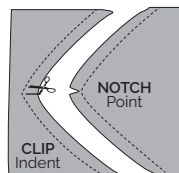
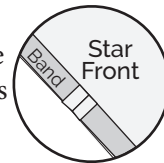
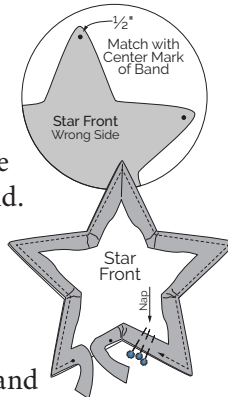
5. Sew around the star, leaving the last few inches open. Sew slowly, pivoting with the needle down at each point and indent.

6. Pin the last inches of the Band to meet at the last side. Mark the ends where they meet. Sew the Band together with a straight seam.

7. After checking that the band fits smoothly in the remaining space, trim the seam allowance.

8. Sew the final section of band to the Star front.

Tip: At each point, cut a small notch to give the seam room to relax. At each indent, make a small snip.

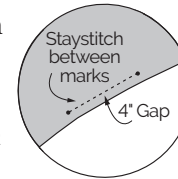


Finishing

1. On the wrong side of the Back, mark a 4" gap for turning.

2. Staystitch between the marks.

Note: Staystitch a matching 4" gap on the band also.



3. With the nap going in the same direction as the Front, pin the Band to the Back.

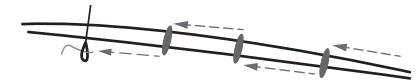
Note: To prevent the Band from stretching, first pin the center mark of the Band to the top point of the Back. Match and pin the other points. Align seam allowance of the Band with the bottom indent of the Star Back. Once these points are in place, pin frequently to fill in the spaces.

4. Sew the Band to the Back, leaving the gap open. Pivot at the marked points to create an L-Pivot.

Note: The L-pivot secures the seam ends when the pillow is turned right side out. It also helps the seam allowance turn in for hand sewing.

5. Turn the pillow right side out. Stuff to desired fullness.

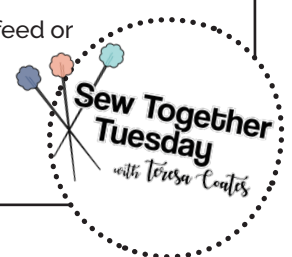
6. Pin the turning gap closed. Hand sew using a ladder stitch.



Ladder Stitch: Using polyester thread and a hand-sewing needle, catch one side of the opening, then the other. Pull to tighten every few stitches.

Cuddle® Basics

1. Mark measurements on reverse side of fabric with a felt tip marker or ballpoint pen.
2. Cut with a rotary cutter, craft knife, or micro-serrated scissors.
3. Shake cut pieces or put in a no-heat dryer with a damp wash cloth for a few minutes to remove loose fibers.
4. Sew with polyester thread in the top and the bobbin.
5. Reduce presser foot pressure when sewing multiple layers.
6. Increase stitch length to 3–4 mm.
7. Double pin by using 2 rows of pins—the first row every 1½" along the seam line and a second row 1" to the left and parallel to the cut edge.
8. Backstitch at beginning and end of seams.
9. Seam allowances are ½".
10. Use an even-feed or walking foot, if possible. It makes a difference!



* WOF = width of fabric



Star Pillow

ENLARGE at 200%