

# Luxe Cuddle® Throw Pillow

*Instructions for an approximately 16" square pillow*

*Guidance for additional sizes included*

*The perfect touch of texture and luxury for any home. So easy to make, your only choice will be trying to decide on the color!*

## Fabric Requirements (for 16" x 16" pillow)

- ½ yard Luxe Cuddle®

## Suggested Notions

- 16" square pillow insert
- 14" all-purpose zipper in a coordinating color
- 90/14 stretch machine needle
- Polyester thread
- Felt tip marker or ballpoint pen
- Craft knife
- Micro-serrated scissors
- Long, flower head pins
- Fabric clips
- Point turner
- Stiletto
- Zipper foot
- Walking foot



For more information on sewing with Cuddle®, scan the QR code or go to: [offers.shannonfabrics.com/beginner](https://offers.shannonfabrics.com/beginner)



The information in this pattern is presented in good faith. Every effort has been taken to assure the accuracy herein.

# Luxe Cuddle® Throw Pillow



# Luxe Cuddle® Throw Pillow

Approximate Finished Size: 16" x 16"

## DIRECTIONS

Read *Cuddle® Basics* before beginning.



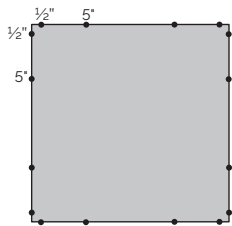
## Cutting

1. Mark 2 (16" x 16") squares on the wrong side of the Luxe Cuddle®.
2. Using a craft knife, cut out the squares.

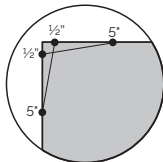
## Assembly

### Mark the corners

1. Lay 1 square wrong side up on a flat surface.
2. Make a mark  $\frac{1}{2}$ " and 5" from each corner. There will be 4 marks on each edge.



3. At each corner, draw a line connecting the  $\frac{1}{2}$ " mark to the 5" mark on the adjacent side. These lines will intersect near the corner.



*Note: These marks will be seam allowance guidelines. Slightly reducing the angles at the corners eliminates creating "dog ears"—those floppy things that are cute on puppies, but not on pillows.*

4. Repeat at each corner.

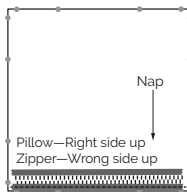
### Insert zipper

1. Place the marked pillow square, right side up, on a flat surface.
- Note: The nap will be running down toward the bottom edge.*

2. Center zipper, wrong side up, along the bottom edge.

3. Pin or fabric clip the zipper to the pillow square.

4. Sew the bottom zipper tape in place.



5. Pin, then sew, the opposite side of the zipper to the right side of the other pillow square.

*Note: Before sewing in the zipper, check that the nap is running down toward the zipper.*

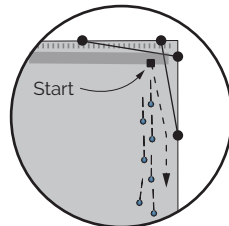
### Finishing

1. Open the zipper about 6".

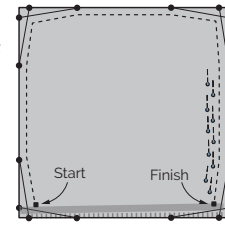
*Note: The opening will be needed to turn the pillow right side out after sewing around the sides.*

2. With right sides together, double pin the remaining sides of the pillow.

3. Start sewing at the  $\frac{1}{2}$ " mark at left hand side of the zipper.



4. Sew around the 3 sides of the pillow. Use the marked lines as the guide for the  $\frac{1}{2}$ " seam allowance. Raise the presser foot with the needle down at the corners to pivot.



*Note: Backstitch at beginning and end of this seam to add strength to the zipper insertion.*

5. Turn the pillow right side out.
6. Use a point turner to gently push out the corners.
7. Insert the pillow form, giving a little extra attention to getting the corners filled.

## Make a pillow of any size

It's easy to change the dimensions of the pillow. Use these guidelines:

- Cut squares (or rectangles) to the size of your desired pillow.
- Choose a pillow insert the same size as your cut squares. *(The seam allowances make your finished pillow slightly smaller than the insert—so your pillow will be nice and plump.)*
- If dimensions are larger than 20", draw corner marks at 1" and 6".

That's it!

## •Cuddle® Basics

1. Mark measurements on wrong side of Cuddle® with a felt tip marker or ballpoint pen.
2. Cut Luxe Cuddle® with a craft knife or micro-serrated scissors.
3. Shake cut pieces or put in a no-heat dryer with a damp washcloth for a few minutes to remove loose fibers.
4. Sew with polyester thread in the top and the bobbin.
5. Reduce presser foot pressure when sewing multiple layers.
6. Increase stitch length to 3–4 mm.
7. Double pin by using 2 rows of pins—the first row every  $\frac{1}{2}$ " along the seam line and a second row 1" to the left and parallel to the cut edge.
8. Backstitch at the beginning and end of each seam.
9. Seam allowances are  $\frac{1}{2}$ ".
10. Use an even-feed or walking foot, if possible. It makes a difference!

