

Cuddle® Wrap

Approximate Finished Sizes:

Adult/Teen; Youth, age 7-12; Child, age 2-6

Drape yourself—or those you love—in the luxurious warmth of Cuddle®. Choose between a lined or an unlined version. Since both versions use basic construction techniques, you might be tempted to make more than one!

Fabric Requirements (Cuddle® fabrics are 58/60" wide.)

Unlined; Recommended: Cloud Cuddle®

ADULT/TEEN	YOUTH	CHILD*
– Main: 2 yards	– Main: 1¾ yards	– Main: 1½ yards
– Contrast: ¾ yard	– Contrast: ¾ yard	– Contrast: ¼ yard

Lined; Luxe Cuddle® (Main, Contrast); Cuddle® 3 (Lining)

ADULT/TEEN	YOUTH	CHILD*
– Main: 2 yards	– Main: 1¾ yards	– Main: 1½ yards
– Lining: 2 yards	– Lining: 1¾ yards	– Lining: 1½ yards
– Contrast: ¾ yard	– Contrast: ¾ yard	– Contrast: ¼ yard

* Child fabric requirements will make 2 Cuddle® Wraps.

Suggested Notions

- 90/14 stretch machine needle
- Polyester thread
- Fabric-safe marker
- Rotary cutter and mat
- Micro-serrated scissors
- Craft knife
- Long, flower head pins
- Fabric clips
- Point turner
- Stiletto
- Walking foot or dual-feed system, if available

Pattern designed by Denise Davenport for Shannon Fabrics.

Fabrics shown on cover: Cloud Cuddle® Sweet Flowers Rose and

Luxe Cuddle® Encore Natural



For more information on sewing with Cuddle®, scan the QR code or go to: offers.shannonfabrics.com/beginner



The information in this pattern is presented in good faith. Every effort has been taken to assure the accuracy herein.

© 2025 Shannon Fabrics Inc., 3131 S. Alameda St., Los Angeles, CA 90058
info@shannonfabrics.com | www.shannonfabrics.com | 866.624.5252

210.CW



Cuddle® Wrap



Includes Sizes for
• Adult •
• Teen •
• Child •

Cuddle® Basics

IF THIS IS YOUR FIRST TIME with Cuddle®—or your tenth!—these simple guidelines will make your sewing experience a pleasure.

1. Seam allowances are ½" unless otherwise noted.
2. Mark measurements on the wrong side of Cuddle® with a felt tip marker, ballpoint pen, or fabric-safe marker.
3. Cut Cuddle® from the back with a rotary cutter, craft knife, or micro-serrated scissors.
4. Shake cut pieces or put in a no-heat dryer with a damp washcloth for a few minutes to remove loose fibers.
5. Sew with polyester thread in the top and the bobbin.
6. Reduce presser foot pressure when sewing multiple layers.
7. Increase stitch length to 3–4 mm.
8. Double pin by using 2 rows of pins—the first row every 1½" along the seam line and a second row 1" to the left and parallel to the cut edge.
9. Backstitch at the beginning and end of each seam.
10. If possible, use a walking foot. It makes a difference!

Suggested Tools for Working with Cuddle®

- Machine needle:
- 90/14 stretch needle
- Polyester thread
- Felt tip marker
- Ballpoint pen
- Fabric-safe marker
- Rotary cutter and mat
- Micro-serrated scissors
- Craft knife
- Long, flower head pins
- Fabric clips
- Stiletto
- Point turner
- Basting spray
- Walking foot

How to Wash Cuddle®

- Machine wash on gentle with cool water.
- (Do not use fabric softener!)
- Machine tumble on no heat for about ten minutes.
- Hang until dry.



Cuddle® Wrap

Approximate Finished Sizes:

Adult/Teen; Youth, age 7–12; Child, age 2–6

DIRECTIONS

- Read *Cuddle® Basics* before beginning.
- Assembly instructions are shown for the Adult/Teen size with Youth and Child sizes in parentheses.
- Adult/Teen is referenced as simply Adult.

Cutting

All measurements are written as (WIDTH X HEIGHT), unless noted.

From MAIN: Outer Wrap + Pockets (Lined and Unlined version)

1. With the wrong side up, smooth the Main fabric on a flat surface.
2. With the nap running down, mark and cut a large rectangle for the Outer Wrap:
 - Adult: 50" x 72"
 - Youth: 42" x 60"
 - Child: 25" x 40"
3. From the extra fabric, cut the Pockets. Remember: W X H.*
 - Adult: 2 (9" x 8")
 - Youth: 2 (8" x 7")
 - Child: 2 (6" x 4")

* W X H = width x height

** WOF = width of fabric

From CONTRAST: Binding + Pocket Trim For Adult/Teen and Youth

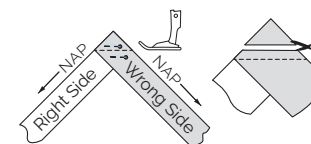
1. Cut 2 (5" x WOF**) Binding strips.
2. From each strip, cut one Pocket Trim piece—two total.
 - Adult: (9" x 5")
 - Youth: (8" x 5")

For Child

1. Cut 1 (4½" x WOF**) strip.
2. From the strip, cut:
 - 1 (4½" x 46") Binding strip.
 - 2 (4½" x 6") Pocket Trim.

Prepare the Binding (Adult + Youth only)

1. Sew the two long strips together using a diagonal seam, with naps going in opposite directions.



2. With diagonal seam centered, cut a 90" (75") length for Binding.

Note: Binding is cut with extra length and will be trimmed during assembly.

From LINING: for Lined Version

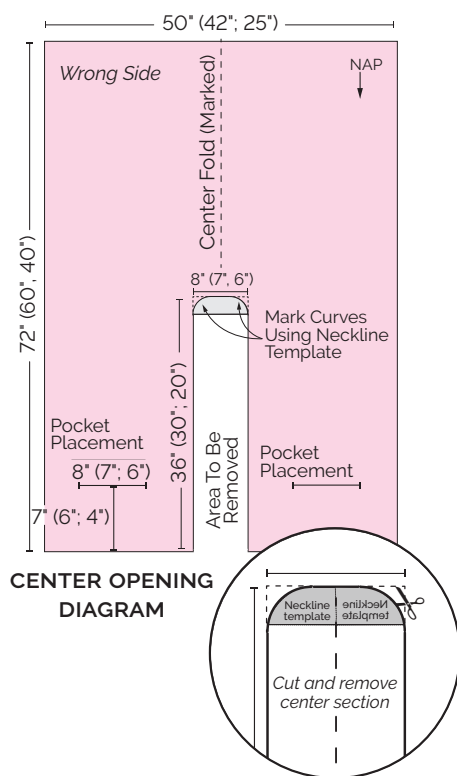
1. Wrong side up, smooth the Lining on a flat surface.
2. Cut a Lining rectangle the same size as the Outer Wrap.

Cut the Center Opening

1. With right sides together, fold Main fabric in half lengthwise. Using a fabric-safe marker, mark the fold.
2. Open Main fabric. With wrong side up and with the nap going toward the front hemline, mark—do not cut!—the front opening. Follow WRAP MEASUREMENTS and CENTER OPENING DIAGRAM.

	Adult	Youth	Child
Center Opening (Use Neckline Template to round upper corners.)	8" x 36"	7" x 60"	6" x 20"
Outer Dimensions (width x height)	50" x 72"	42" x 60"	25" x 40"

WRAP MEASUREMENTS (Dimensions)



3. Use the appropriate Neckline Template to mark the curves at the top of the opening.
Note: Templates for the neckline curves are on the last page.

4. Cut the center opening on the marked line.

Mark the pocket placement

1. To indicate the placement of the lower edge of the pocket, follow the CENTER OPENING DIAGRAM to mark a horizontal line on the wrong side. Center the line between the two cut edges.
 - Adult: 8" wide, 7" from bottom.
 - Youth: 7" wide, 6" from bottom.
 - Child: 6" wide, 4" from bottom.

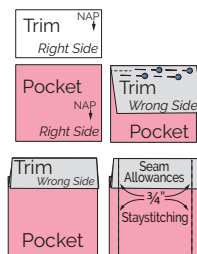
2. From the wrong side, staystitch along the marked line.

Note: Staystitching provides the guideline to place the completed Pocket correctly on the right side.

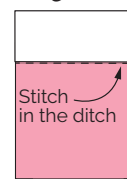
Assembly

Make the Pockets

1. With right side up and nap running down, place Pocket Trim along top edge of a Pocket.
2. Flip Trim down, matching raw edges. Pin.
3. Sew the seam.
4. Fold Trim in half, right sides together.
5. With a $\frac{3}{4}$ " seam allowance, stitch short edges of the Trim.
6. Continue staystitching down the sides to stabilize the edges.



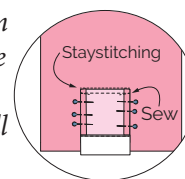
7. Flip the Trim right side out.
8. Fold and pin the side edges in toward the center.
9. Stitch in the ditch along Trim/Pocket seam to secure.
10. Make the second Pocket.



Sew Pockets to Wrap

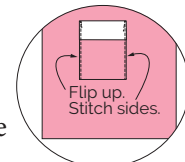
1. With right sides together, align the bottom edge of the Pocket with the staystitched line on the right side of the Wrap.

Note: Pocket Trim will be toward the bottom of Wrap. Side edges are still pinned toward the inside.



2. Pin lower edge of Pocket in place. Stitch in place $\frac{1}{2}$ " from the staystitched line.

3. Flip Pocket up. Wrong side of Pocket is now against right side of the Wrap. Pin Pocket edges to the Wrap.



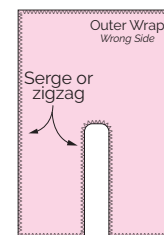
Note: Remove pins holding side seam allowances, if necessary.

4. Sew from bottom to top. Stitch slowly over the Trim. Backstitch at the top of the Pocket.
5. Attach the other Pocket.
6. Use a stiletto to fluff the fibers from the topstitching.

Finish the Edges

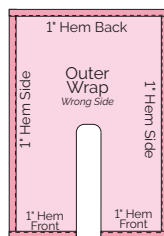
Unlined Version: Hem the Edges

1. Serge or use a wide (4x4mm) zigzag around the outer edge and interior curve. Take care not to stretch as you sew.



Note: Although not hemmed, stitching the center opening helps stabilize the edges when adding the binding.

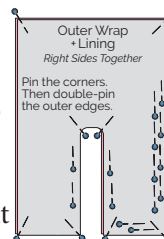
2. First sew a 1" hem on each side edge, then the back and two front edges.



Jump ahead to: Binding the Wrap

Lined Version: Add Lining

1. Place lining over main, right sides together, matching all corners and center back.
2. Pin or fabric clip at all corners.
3. Taking care not to stretch, continue pinning/clipping along bottom front edges, side edges, and bottom back edge.
Note: Add a few pins around the center opening to stabilize the Wrap while sewing the outer edges.
4. In the following order, sew:
 - Bottom back edge.
 - Both lower fronts.
 - Each side edge.

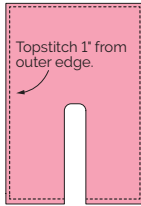


5. Turn the Wrap right side out through the center opening. Use a point turner to gently push out the corners.

6. Topstitch 1" around the outer edges, if desired.

7. At the opening, align the lining and the outer. Pin the two layers together. Baste.

Note: Basting keeps the layers stable while binding.



Continue on with Binding the Wrap

Binding the Wrap (both versions)

Going forward, the two layers of the lined version will be referenced simply as the "Wrap."

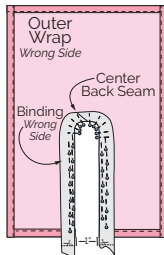
Prepare center binding

1. With right side of the Binding against the wrong side of the Wrap, pin the center seam of Binding to the center back of the neckline.

Note: Pin frequently. Then pin some more. It takes extra time, but avoids the frustration of having the Binding stretch.

2. Double pin down both sides to the bottom edge (hem or lining).

Note: Binding has extra length to allow for cutting variations. Do not stretch while pinning.



3. For each side, sew from the center back neckline to an inch past the bottom edge. Backstitch.

4. Make small clips around the neckline curve in both the Binding and the Wrap.

Note: Take care not to clip into the stitching.

5. Trim Binding 1" below the hem/lining.

6. Smooth the Binding back, away from the seam.

7. Fold the binding back on itself, right sides together. Match raw edge of Binding to the seamline of the Binding/Wrap.

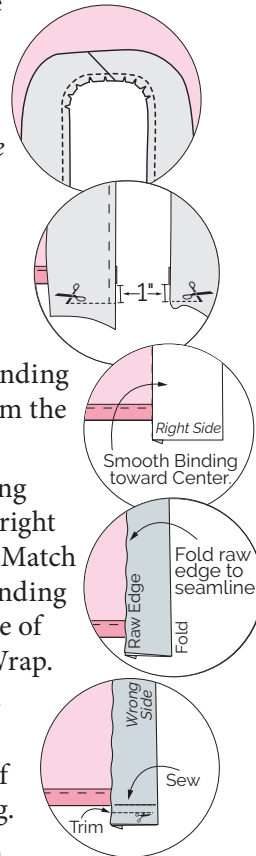
8. Sew across the Binding, even with bottom of the hem/lining.

9. Trim the seam allowance to 1/2".

10. Turn Binding ends right side out.

11. Fold the Binding to the front, matching the raw edge with the previous stitching line.

Note: When binding a quilt, the binding edge is snug against the quilt edge. For this Wrap, binding will form a wide edging.

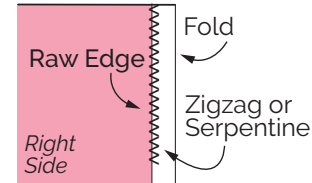


12. Pin the Binding in place.

13. Topstitch on the right side, using a 4x4mm zigzag or serpentine stitch.

Note: Stitch with needle coming down just left of the raw edge.

14. Use a stiletto to fluff fibers from the topstitching.



Finished! Enjoy your wrap!

• • • CONSTRUCTION NOTES • • •

CUDDLE® WRAP

Neckline, Adult

Trace or copy @ 100%

Shannon
FABRICS

Place on Fold

CUDDLE® WRAP

Neckline, Youth

Trace or copy @ 100%

Shannon
FABRICS

Place on Fold

CUDDLE® WRAP

Neckline, Child

Trace or copy @ 100%

Shannon
FABRICS

Place on Fold