



Cuddle™ Bouquet Peasant Dress and Ruffle Pants

Free 2T pattern by
Sewing Mama RaeAnna
for
Shannon Fabrics

Fabrics:

[1/2 yard Daisy Bouquet Coral from Crazy for Daisies by ADORNiT](#) (dress)

[1/2 yard Mini Zag Aqua/Red/Breeze from Nested Owls by ADORNiT](#)

(sleeve and ruffle for pants)

[3/4 yard Cuddle™ Dimple Teal](#) (pants)

Sewing with Cuddle™

These patterns are very easy to put together and sew. Cuddle™ fabric works best when you take care to pin each seam before sewing. You should be able to complete this project in under 3 hours!

Notions:

Sewing machine
Basic sewing supplies:

Thread
Ballpoint needle
Pins
Scissors
1/4" elastic and
3/4" elastic

Cuddle™ Bouquet Peasant Dress and Ruffle Pants

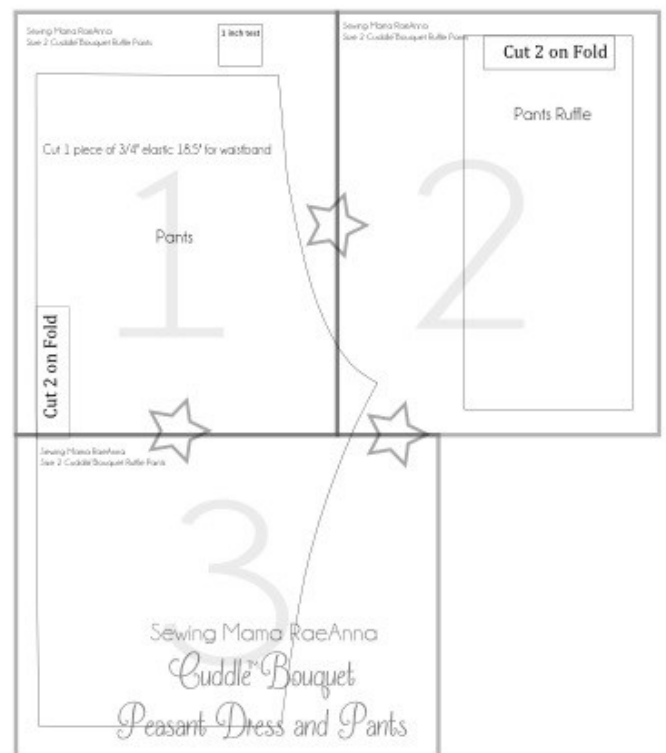
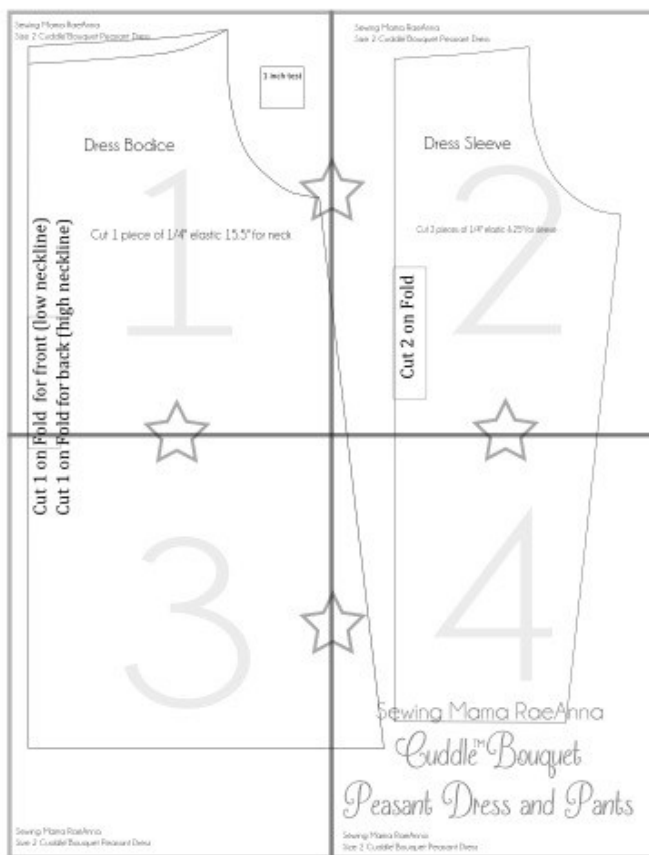
Below you will find a guide to tape your PDF printed pages together. When you print, make sure to select "actual size" so that your pattern does not print at the wrong scale. Check the 1 inch test box before cutting out your fabric to make sure everything is the right size!

Read through each step before beginning your project! If there are any questions please contact me at raeannag@gmail.com and I will be happy to help you! I drafted these patterns off of my daughter's measurements. She wears a 24m/2T in ready to wear clothes. The dress is meant to be worn with the ruffle pants. If you prefer to have the dress worn alone, add 3-4 inches to the length.

To print only the pattern pieces for the dress, print pages 12-15

To print only the pattern pieces for the pants, print pages 16-18

LEVEL—Beginner



Terms of Use:

Items made from this pattern may be used to sell in limited quantities.

The pattern itself may NOT be distributed.

All photos and images are copyright protected.



Step 1

Assemble all your fabric and supplies. Elastic sizes are marked on the pattern pieces.

Tape the pattern and pin to the fabric to cut out each piece.

We will begin construction on the dress first!

To skip to the pants construction go to page 8.



Step 2

Lay your front, back and sleeve pieces as shown.



Step 3

Pin the sleeves right sides together with the front bodice.

Sew along the dotted line with a $\frac{3}{8}$ " seam allowance.

Finish seam with a serger or zig-zag stitch.



Step 4

Pin the sleeves right sides together with the back bodice.



Step 5

Sew sleeve to bodice back the same way you did in step 3.

Finish seams with a serger or zig-zag stitch.



Step 6

On the back of the sleeve, mark a line 4.5" up from the bottom edge. This will be the marking for attaching the elastic.

Mark each sleeve.



Here you can see each sleeve marked with a water soluble marking to show where to pin each sleeve elastic.

Step 7



Pin the elastic at the top, middle and bottom of your line. Sew with a zig-zag stitch while you gently stretch out the elastic to fit the width of the sleeve.



Here is what your sleeve should look like.



Step 8

Pin the bodice front to the bodice back right sides together and sew in one continuous line from the bottom of the dress to the end of the sleeve. Use a $\frac{3}{8}$ " seam allowance.

Repeat for the other side of the dress.

Finish seam with a serger or zig-zag stitch.



Step 9

Fold the sleeve hem $\frac{3}{4}$ " to the wrong side and stitch in place. You could also fold $\frac{1}{4}$ " and again $\frac{1}{2}$ ".

Repeat for the other sleeve.



Step 10

Fold down the neck edge $\frac{3}{4}$ " to the wrong side and sew $\frac{1}{8}$ " from the edge to create a casing for the neck elastic. Leave a 2" opening in the back to insert your elastic.

TIP—as you see in the picture, when you sew the neck casing keep each sleeve seam folded toward you so that you will be able to thread your neck elastic without any troubles.



Step 11

Use a safety pin to guide your neck elastic through the casing.

Step 12

Sew the ends of the elastic together and then sew the 2" opening closed. Insert your size or clothing label during this last step.

Admire your cute dress!





Step 1

Pin both pattern pieces right sides together



Step 2

Sew along the “J” seam only on each side with a $\frac{3}{8}$ ” seam allowance.

Finish seam with a serger or zig-zag stitch.

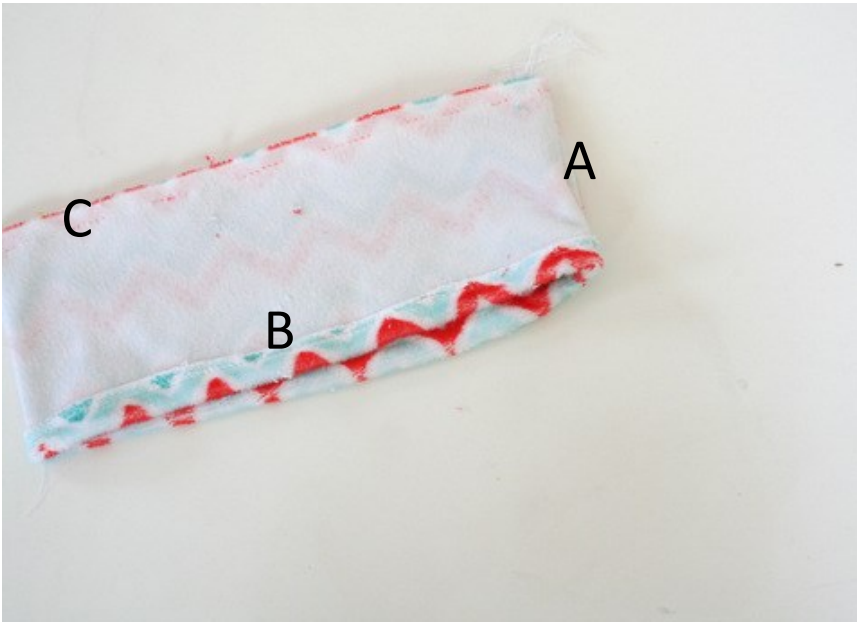


Step 3

Unfold the pants so the “J” seams are in the front and back.

Sew the inseam of the pants from the bottom of one leg to the bottom of the other leg.

Finish seam with a serger or zig-zag stitch.



Step 4

Take your ruffle strips and sew right sides together and finish seam (A)

Fold the hem 3/4" to the wrong side and stitch in place. (B)

Add a basting stitch to the top of the ruffle and pull the threads to gather the ruffle to the pant leg opening. (C)



Step 5

Pin the ruffle in place and sew a 1/2" seam allowance to attach the ruffle to the pant leg.

Repeat steps 4 and 5 with the other leg.

Finish seam with a serger or zig-zag stitch.



Step 6

Fold the raw edge of the top of the pants down 1/4" and another 1" and sew 1/8" from the edge leaving a 2" opening in the back to create a casing for the waist elastic.

Use a safety pin to guide in the elastic. Secure the elastic ends together and sew the opening closed.



Step 7

Add a size tag or clothing label to the back.

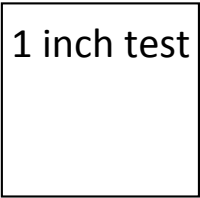
Admire your cute ruffle pants!



Thank you to Shannon Fabrics for providing the fabric for this tutorial and pattern.
Please visit their website at <http://www.shannonfabrics.com> for all your Cuddle™ fabric needs.
If you have any specific questions about this pattern please e-mail raeannag@gmail.com and be
sure to visit and follow my blog at

www.sewingmamaeanna.com

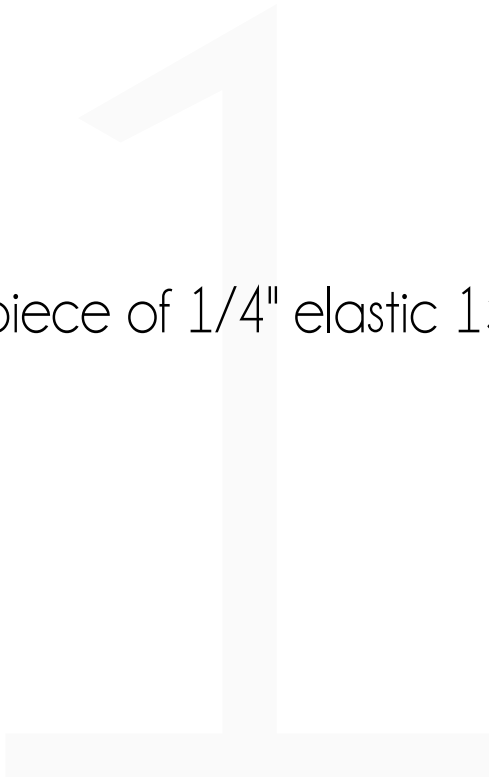




Dress Bodice

Fold for front (low neckline)
Fold for back (high neckline)

Cut 1 piece of 1/4" elastic 15.5" for neck

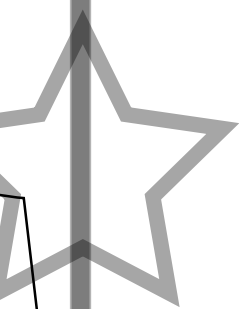


Sewing Mama RaeAnna
Size 2 Cuddle™ Bouquet Peasant Dress

Dress Sleeve

Cut 2 pieces of 1/4" elastic 6.25" for sleeve

Cut 2 on Fold



Cut 1 on Fold

Cut 1 on Fold





Sewing Mama RaeAnna

CuddleTM Bouquet

Peasant Dress and Pants

Sewing Mama RaeAnna

Size 2 CuddleTM Bouquet Peasant Dress

1 inch test

Cut 1 piece of 3/4" elastic 18.5" for waistband

Pants

Cut 2 on Fold

Sewing Mama RaeAnna

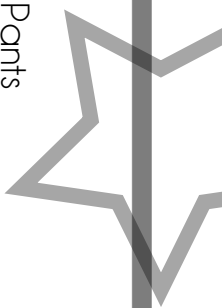
Size 2 Cuddle™ Bouquet Ruffle Pants

Cut 2 on Fold

Pants Ruffle

2

Sewing Mama RaeAnna
Size 2 Cuddle Bouquet Ruffle Pants



Sewing Mama RaeAnna

Cuddle[™] Bouquet

Peasant Dress and Pants